



COMMERCIAL • INDUSTRIAL • RESIDENTIAL

PROTECH High Performance Finishes PRE-CATALYZED EPOXY

- Single Component Convenience
- Excellent Abrasion Resistance
- Multi Surface Adhesion
- Chemical & Stain Resistant
- For Use In USDA Inspected Facilities
- Interior, Waterborne, Low VOC (<50 g/L)



DURABLE PROTECTION FOR HIGH TRAFFIC AREAS

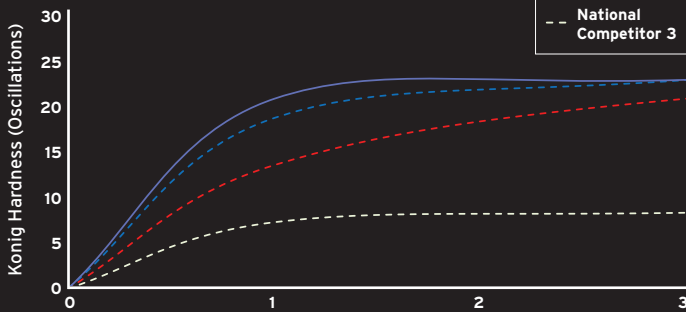
Storage Tank, Structural Steel, Plant Maintenance, Ornamental Steel, Dry Goods Containers, HVI Maintenance, Healthcare, Education, OEM, Food Processing, Commercial Kitchens

The Rodda Paint Difference

HARDNESS DEVELOPMENT

Method: ASTM D4366

Result: 20 - 25; With "Konig Pendulum" oscillations



ADHESION TO ALUMINUM SUBSTRATE

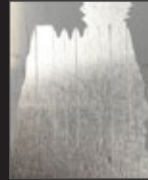
Method: ASTM D3359 - Method B

Result: 4B - 5B (Excellent) Depending on Substrate

100% Adhesion for light colors; Darker colors require longer cure time for same level of adhesion



PROTECH



National Competitor 1



National Competitor 2



National Competitor 3

ABRASIVE SCRUB RESISTANCE

Method: ASTM D2486

Result: 800-900 Cycles; With Pumice Scrub Media and Stiff Bristle Brush



PROTECH



National Competitor 1



National Competitor 2



National Competitor 3

BEST IN CLASS ADVANTAGE

Property	Rodda Paint	National Comp. 1	National Comp. 2	National Comp. 3
Hardness Development	+++	+	++	
Pencil Hardness	++		+	
Low Temperature (50°F) Application	+			+
Multipurpose Adhesion	+++		++	
Reverse/Direct Impact Resistance	++	++		+
Block Resistance	++		++	
Chemical Resistance	++	+	++	
Stain Resistance	++	+	++	

PROTECH Pre-Catalyzed Epoxy Technical Data

Sheen	Base	Gloss Level	VOC	Volume Solids	Film Thickness		Relative Humidity	Minimum Application Temperature	Maximum Application Temperature	Application and Curing
					Wet	Dry				
Satin/Eggshell	White Deep Neutral	3	<50 g/L	34% (May vary +/-2% by Base & Color)	4.0 - 6.0 mils	1.4 - 2.2 mils	Not to exceed 85% during application/curing phase	50°F (substrate)	110°F (substrate)	At 70°F + 50% Relative Humidity: • Dry to touch: 1 hr • Dry to re-coat: 4 hrs • Dry hard: 7-14 days (Film thickness will affect dry/cure times)
Semi Gloss	White Deep Neutral	5								

For additional details please see your Rodda Representative for the Technical Data Sheet (TDS) for this product.



Made in the Northwest, for the Northwest for 85 years.

Rodda Paint offers a Limited Lifetime Warranty for PROTECH Pre-Catalyzed Epoxy against manufactured defects, chipping, peeling & blistering subject to application conditions and exclusions.

Go to our website www.rodapaint.com or ask your Rodda Paint representative for details.



FINISH RIGHT

6107 N. Marine Drive, Portland, OR
503-521-4300 | 800-452-2315
www.rodapaint.com

Ask your Rodda Paint representative about the new Cascadia Color Collection.

